



# 14-LEDUC

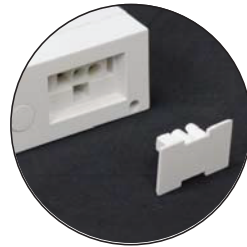
## Hardwire LED Under Cabinet Light

### APPLICATIONS

Allows for easy replacement of existing fluorescent, incandescent, halogen and xenon under cabinet lighting. Built-in driver, captive screws and knockouts for easy installation in new work or remodel applications.

### FEATURES

- Built-in integral electronic driver
- Dimmable 120V
- On / Off rocker switch
- ≥80 or ≥90 CRI
- Available in 9 different lengths
- Rear panel punch-in electrical connectors for easy wiring
- 2700K
- 50,000 hour life expectancy
- Available in white
- Linkable up to 400W
- Certified to CEC under Title 20 regulations.

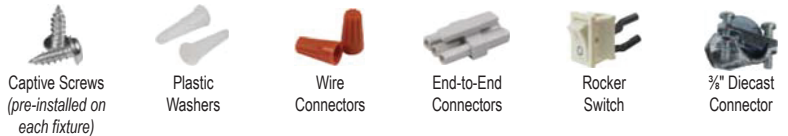


Link several undercabinets together with the Linkable Connector Wire



Pre-positioned installation screws

### Under Cabinet Included Accessories



### Under Cabinet Available Accessories



MODEL	DESCRIPTION	INPUT VOLTAGE	CRI	WATTS	LUMENS
14-LEDUC8	Undercabinet Light - 8"	120V	> 90	4W	250
14-LEDUC11	Undercabinet Light - 11"	120V	> 90	6W	360
14-LEDUC14	Undercabinet Light - 14"	120V	> 90	9W	510
14-LEDUC18	Undercabinet Light - 18"	120V	> 90	11W	620
14-LEDUC22	Undercabinet Light - 22"	120V	> 90	11W	680
14-LEDUC29	Undercabinet Light - 29"	120V	> 90	13W	780
14-LEDUC32	Undercabinet Light - 32"	120V	> 90	15W	950
14-LEDUC36	Undercabinet Light - 36"	120V	> 90	16W	1060
14-LEDUC48	Undercabinet Light - 48"	120V	> 90	18W	1180

PROJECT	TYPE	CATALOG #