



COST LESS LIGHTING

4200 Regent St. Suite 200
Columbus, OH 43219

YOUR GUIDE TO HIGH BAY LIGHTING

The most complete High Bay offering can be found right here at Cost Less Lighting. Ready to ship in as little as 48 hours.

OUR HIGH BAY FEATURES

Lumen and Kelvin Selectable

Screw-in Sensor Ready

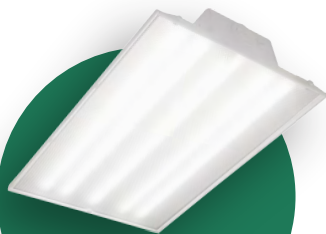
Universal 120-277V; optional 347-480V

cULus Listed for Damp Locations

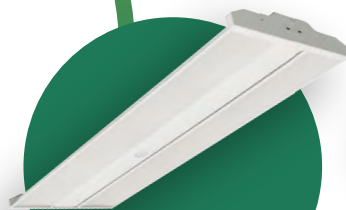
Sold with a 5 year warranty

HIGH BAYS ARE PERFECT FOR

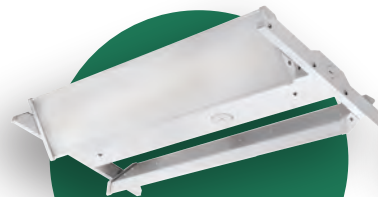
- Warehouses
- Gymnasiums
- Grocery Stores
- Factories
- Storage Facilities
- and MORE!



FULL BODY



LINEAR



ADJUSTABLE



ROUND

ADJUSTABLE HIGH BAY



- Universal voltage 120-277V
- Power factor >0.90
- CRI >80
- 0-10Vdc dimming
- Optional Passive Infrared or microwave sensor
- L70 = 148,000 hours
- Optic panels rotate up to 135 degrees

Product Number	Selectable Lumen Output	Watts	Efficacy	Selectable CCT	Length (in)	Width (in)	Height (in)
07-HBLASR-15139L-LKFS	15,819 lumens	107	148 lm/W	4000K/5000K	25.8"	12.1"	1.9"
	12,681 lumens	83	152 lm/W				
	9,350 lumens	64	155 lm/W				
07-HBLASR-241815L-LKFS	23,645 lumens	157	150 lm/W	4000K/5000K	25.8"	12.1"	1.9"
	17,959 lumens	115	156 lm/W				
	15,038 lumens	95	158 lm/W				
07-HBLASR-302418L-LKFS	31,090 lumens	205	151 lm/W	4000K/5000K	25.8"	12.1"	1.9"
	25,457 lumens	163	157 lm/W				
	19,469 lumens	121	161 lm/W				

FULL BODY HIGH BAY



- Universal voltage 120-277V; optional 347-480V
- Power factor >0.90
- 0-10Vdc dimming
- Field selectable output and color temperature
- Sensor Ready- screw in receptacle
- L70 = 135,000 hours
- Chain mounting kit is standard, other mounting options available

Product Number	Selectable Lumen Output	Watts	Efficacy	Selectable CCT	Length (in)	Width (in)	Height (in)
07-FHBSR-181512L-LKFS	18,260 lumens	127	143 lm/W	4000K/5000K	13"	9.5"	2.20"
	15,387 lumens	104	148 lm/W				
	12,454 lumens	82	153 lm/W				
07-FHBSR-241815L-LKFS	23,772 lumens	158	150 lm/W	4000K/5000K	14.2"	10.25"	2.40"
	18,164 lumens	116	156 lm/W				
	15,480 lumens	98	159 lm/W				
07-FHBSR-363024L-LKFS	35,415 lumens	235	150 lm/W	4000K/5000K	19.7"	10.25"	2.60"
	29,825 lumens	192	155 lm/W				
	24,204 lumens	151	160 lm/W				
07-FHBSR-604836L-LKFS	59,177 lumens	390	152 lm/W	4000K/5000K	30.7"	11"	2.60"
	47,698 lumens	305	156 lm/W				
	36,167 lumens	248	161 lm/W				

COST LESS
LIGHTING



866.633.6883



PREMIUM ROUND HIGH BAY

- Universal voltage 120-277V; optional 347-480V
- Power factor >0.90
- 0-10Vdc dimming
- Field selectable output and color temperature
- Sensor Ready- screw in receptacle
- Optional Passive Infrared photocell (PIR) or Microwave sensor sold separately
- L70 = 146,000 hours
- Available in black or white

Product Number	Selectable Lumen Output	Watts	Efficacy	Selectable CCT	Diameter (in)	Height (in)
07-HBRSR-221816L-LKFS	22,935 lumens	147	156 lm/W	4000K/5000K	10.6"	5.5"
	18,790 lumens	115	163 lm/W			
	15,891 lumens	95	168 lm/W			
07-HBRSR-353024L-LKFS	35,716 lumens	229	156 lm/W	4000K/5000K	13"	5.6"
	30,801 lumens	192	160 lm/W			
	24,368 lumens	146	167 lm/W			

LINEAR HIGH BAY

- Universal voltage 120-277V; optional 347-480V
- Power factor >0.90
- Sensor ready
- 0-10Vdc dimming
- Field selectable output and color temperature
- Optional occupancy sensor
- L70 = 134,000 hours
- Emergency drivers available
- Optional narrow or wide distribution



Product Number	Selectable Lumen Output	Watts	Efficacy	Selectable CCT	Length (in)	Width (in)	Height (in)
07-HBLSR-181512L-LKFS	18,085 lumens	120	150 lm/W	4000K/5000K	16.5"	10.25"	1.8"
	14,555 lumens	96	152 lm/W				
	12,007 lumens	76	158 lm/W				
07-HBLSR-241815L-LKFS	24,047 lumens	158	152 lm/W	4000K/5000K	23"	10.25"	1.8"
	18,017 lumens	115	157 lm/W				
	15,021 lumens	94	159 lm/W				
07-HBLSR-363024L-LKFS	35,517 lumens	237	150 lm/W	4000K/5000K	31"	10.25"	1.8"
	30,037 lumens	193	156 lm/W				
	24,049 lumens	152	158 lm/W				
07-HBLSR-604836L-LKFS	60,104 lumens	404	149 lm/W	4000K/5000K	44"	10.25"	1.8"
	48,182 lumens	312	154 lm/W				
	37,049 lumens	236	157 lm/W				



SENSOR READY

Sensor ready is a unique feature that saves wiring in the field and safer than shipping fixtures with installed sensors.

- Every fixture has a screw-in, sensor receptacle that accepts an RCA jack.
- Sensor-ready means labor saving.
- Sensors can be added to any fixture before or after it's installed.



LUMEN & KELVIN SELECTABLE

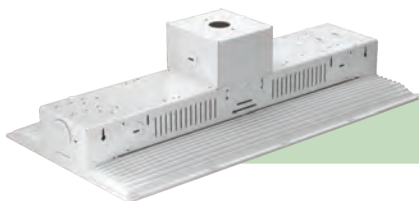
Every high bay is both Lumen selectable and Kelvin temperature (CCT) selectable.

- You always have the right fixture in stock ready to ship. There are never more than 4 base-models of any given high bay style.
- Easy-access switches mean that the installer can make adjustments if necessary in the field to satisfy either a last minute change or client preference.

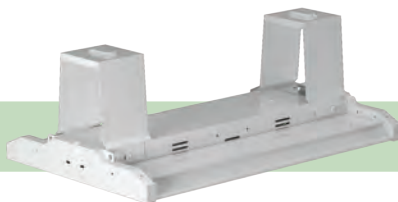


Optional Mounting Kits

Pendant Mount
(Linear Only)



Surface Mount
(Linear Only)



Yoke Mount
(Round only)



Pendant Snap Hook Mount
(Round only)



Satisfy every job, every time. Whether you are setting the spec or meeting the spec, every option is in-stock ready to ship. The answer is always "yes!"