



**COST LESS  
LIGHTING**

# Lighting & Electrical Supply Catalog 2025



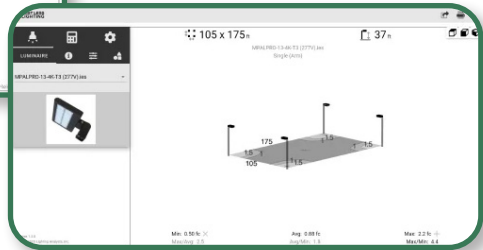
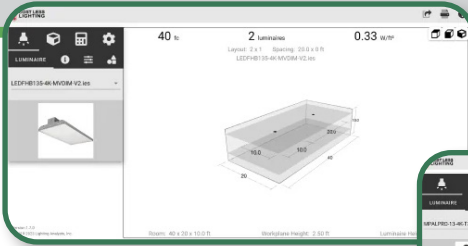
Visit our website and explore our

## LIGHTING AND ENERGY TOOLS

Easily create lighting layouts for indoor and outdoor applications. Our tool takes the guesswork out of lighting designs.

### Indoor/Outdoor Lighting Design Tools

- Determine number of fixtures for your project
- Output a professional detailed summary
- Predict performance by inputting height, placement, angle, etc



### Utility Rebate Explorer

- Explore current utility rebates with our products
- Displays all products in a table, complete with utility rebate estimates and products attributes
- Can be filtered by product category or by searching

### Utility ROI Calculator

- Calculate the energy savings and your return on investment
- Displays all products, calculating and ROI for a single-line retrofit

# TABLE OF CONTENTS

MULTIPURPOSE AREA & FLOOD LIGHTS	4
LIGHT POLES	5
BOLLARDS	6
CANOPY LIGHT	7
DUSK-TO-DAWN	7
WALL PACKS	8
HIGHBAYS	10
STRIP LIGHTS	12
WRAPS	12
STAIRWELL	13
VAPORTIGHT	14
LED REPLACEMENT TUBES	14
UNDERCABINET	15
GRID CEILING PANEL LIGHTS	15
RECESSED DOWNLIGHTS	16
FLAT PANEL LIGHT	17
LED RECESSED CANS AND TRIMS	18
SURFACE MOUNT LIGHTS	19
DISK LIGHTS	20
EXIT SIGN, EMERGENCY LIGHTING & COMBOS	21
EMERGENCY POWER SYSTEMS	22
SENSORS & DIMMERS	24
SWITCHES & RECEPTACLES	25
WIRE CONNECTORS / GOOF RINGS / CABLE TIES	26

**OUTDOOR**

**INDOOR**

**LIFE  
SAFETY**

**ACCESSORIES**

## MULTI-PURPOSE AREA LIGHT PRO

- Field selectable output and color temperature
- Distribution Type III or Type V
- Universal voltage 120-277V or 277-480V
- 0-10v dimming
- Power factor >0.90
- CRI >80
- Optional NEMA photocell
- L70 = 162,000 hours



Mounting	
08-MPAL-ARM	Arm Mount
08-MPAL-ARM-A	Adjustable Arm
08-MPAL-SF	Slip-fitter
08-MPAL-TM	Trunion
08-MPALPRO-YM	Yoke



Product Number	Selectable Lumen Output**	Watts*	Efficacy*	Selectable CCT	Length (in)	Width (in)	Height (in)
08-MPALPRO-24L-LKFS	26,598 lumens	178	150 lm/W	3000K/4000K/5000K	17"	12"	4"
	22,824 lumens	146	156 lm/W				
	16,173 lumens	100	162 lm/W				
08-MPALPRO-40L-LKFS	44,173 lumens	284	156 lm/w	3000K/4000K/5000K	23.5"	12"	4"
	37,248 lumens	232	160 lm/W				
	32,211 lumens	198	163 lm/W				

## MULTI-PURPOSE AREA LIGHT

- Field selectable color temperature
- Universal voltage 120-277V
- 0-10v dimming
- Power factor >0.90
- CRI >80
- L70 = 149,000 hours.



Mounting	
08-MPAL-KFS-YKL	Yoke mount (4L & 7L)
08-MPOST17	Line Voltage Ground Stake
08-CM-R	Round Canopy Mounting Plate



Product Number	Selectable Lumen Output*	Watts*	Efficacy*	Selectable CCT	Length (in)	Width (in)	Height (in)
08-MPAL-2L-KFS	2,180 lumens	15	145 lm/W	3500K/4000K/5000K	4.3"	1.7"	5.8"
08-MPAL-4L-KFS	4,695 lumens	30	155 lm/w	3500K/4000K/5000K	8.7"	1.9"	9"
08-MPAL-7L-KFS	7,170 lumens	49	147 lm/W	3500K/4000K/5000K	8.7"	1.9"	9"

## BULLET FLOOD LIGHT

- Field selectable output and color temperature
- Universal voltage 120-277V
- 0-10v dimming
- Power factor >0.90
- CRI >70
- L70 = 151,000 hours
- Built in photocell
- Beam angle 3H3V distribution



Mounting	
08-MPOST17	Line Voltage Ground Stake
08-CM-R	Round Canopy Mounting Plate



Product Number	Selectable Lumen Output*	Watts*	Efficacy*	Selectable CCT	Length (in)	Width (in)	Height (in)
08-BF-453730L-3CCT	3,187 lumens	20	161 lm/W	3000K/4000K/5000K	6.4"	5.5"	8.9"
	4,008 lumens	25	158 lm/W				
	5,064 lumens	33	152 lm/W				

\*Nominal values shown for CCT set at 4000K  
 \*\*Nominal values shown at 3

## ASK ABOUT OUR LIGHT POLES!

We have a full range of durable poles to enhance any outdoor space!

- Square and round styles
- Up to 30 ft.
- Direct Burial



## LIGHT POLE BRACKETS

Call a representative for more information!

Bullhorns	Low Profile Bullhorns
Spoke Brackets	Pole Side Brackets
Wall Mount Brackets	Cantilever Brackets
Wrap Around Pole Brackets	Upsweep Brackets

## UFO HEAD BOLLARD LIGHT

- Field selectable output and color temperature
- Universal voltage 120-277V
- 0-10v dimming
- Power factor >0.90
- CRI >70
- L70 = 192,000 hours.
- Black and Bronze housing colors available.



Mounting	
06-BOL-R-MTGKIT	Anchor Bolt for Round Bollard



Product Number	Selectable Lumen Output*	Watts*	Efficacy*	Selectable CCT	Base Width (in)	Head Width (in)	Height (in)
06-BOL-UFO-302317L-3CCT	3,019 lumens	23	131 lm/W	3000K/4000K/5000K	6"	10"	42"
	2,385 lumens	18	134 lm/W				
	1,770 lumens	13	135 lm/W				

## BOLLARD LIGHTS - FLAT TOP

- Field selectable output and color temperature
- Universal voltage 120-277V
- 0-10v dimming
- Power factor >0.90
- CRI >80
- L70 = 163,000 hours.
- Black and Bronze housing colors available.



Mounting	
06-BOL-R-MTGKIT	Anchor Bolt for Round Bollard
06-BOL-S-MTGKIT	Anchor Bolt for Square Bollard



Product Number	Selectable Lumen Output*	Watts*	Efficacy*	Selectable CCT	Length (in)	Width (in)	Height (in)
06-BOL-R-3L-LKFS	3,244 lumens	22	145 lm/W	3000K/4000K/5000K	6"	6"	42"
	2,686 lumens	19	145 lm/W				
	1,974 lumens	14	144 lm/W				
06-BOL-S-3L-LKFS	3,047 lumens	23	135 lm/w	3000K/4000K/5000K	6"	6"	42"
	2,450 lumens	18	135 lm/W				
	1,790 lumens	14	130 lm/W				

## BOLLARD LIGHTS - DOME TOP

- Field selectable output and color temperature
- Universal voltage 120-277V
- 0-10v dimming
- Power factor >0.90
- CRI >80
- L70 = 163,000 hours.
- Black and Bronze housing colors available.



Mounting	
06-BOL-R-MTGKIT	Anchor Bolt for Round Bollard



Product Number	Selectable Lumen Output*	Watts*	Efficacy*	Selectable CCT	Length (in)	Width (in)	Height (in)
06-BOL-RD-3L-LKFS	3,249 lumens	22	145 lm/W	3000K/4000K/5000K	6"	6"	44"
	2,530 lumens	17	145 lm/W				
	1,818 lumens	12	150 lm/W				
06-BOL-RDL-2L-LKFS	1,692 lumens	22	75 lm/W	3000K/4000K/5000K	6"	6"	44"
	1,351 lumens	17	80 lm/W				
	973 lumens	12	80 lm/W				

\*Nominal values shown for CCT set at 4000K



## CANOPY LIGHT

- Field selectable output and color temperature
- Universal voltage 120-277V
- 0-10Vdc dimming
- Power factor >0.90
- CRI >80
- Optional factory installed microwave and dimming sensors
- L70 = 149,000 hours
- Available in White or Bronze finish



Product Number	Selectable Lumen Output*	Watts*	Efficacy*	Selectable CCT	Length (in)	Width (in)	Height (in)
06-CP-10L-LKFS	10,500 lumens 8,250 lumens 6,950 lumens	69 51 43	150 lm/W 160 lm/W 165 lm/W	3000K/4000K/5000K	10.5"	9.6"	3.4" (with sensor)

## DUSK-TO-DAWN LIGHT

- Universal voltage 120-277V
- Power factor >0.90
- CRI >80
- L70 = 163,000 hours
- NEMA photocell standard
- Polycarbonate lens



Mounting	
08-LED-DDALS-N-ARM	Mounting arm with bracket

Product Number	Lumen Output	Watts	Efficacy	CCT	Length (in)	Width (in)	Height (in)
08-DDAL-5L-5k-PC	4,900 lumens	37	133 lm/W	5000K	10"	7"	6"



## TRADITIONAL WALL PACK

- Field selectable output and color temperature
- Universal voltage 120-277V
- Power factor >0.90
- CRI >70
- Glass lens
- Optional photocell
- L70 = 130,000 hours



Product Number	Selectable Lumen Output*	Watts*	Efficacy*	Selectable CCT	Length (in)	Width (in)	Height (in)
06-WPT-7L-LKFS	7,290 lumens 5,853 lumens 4,668 lumens	49 38 29	149 lm/W 150 lm/W 151 lm/W	3000K/4000K/5000K	14"	9"	5"
06-WPT-10L-LKFS	10,652 lumens 8,785 lumens 6,741 lumens	74 57 42	144 lm/W 154 lm/W 159 lm/W	3000K/4000K/5000K	14"	9"	5"
06-WPT-15L-LKFS	15,552 lumens 13,506 lumens 10,548 lumens	110 91 69	141 lm/W 149 lm/W 153 lm/W	3000K/4000K/5000K	14"	9"	5"

## ADJUSTABLE WALL PACK

- Field selectable output and color temperature
- Universal voltage 120-277V
- Power factor >0.90
- CRI >80
- Polycarbonate lens
- L70 = 146,000 hours



Product Number	Selectable Lumen Output*	Watts*	Efficacy*	Selectable CCT	Length (in)	Width (in)	Height (in)
06-WPA-5L-LKFS	5,084 lumens 3,842 lumens 3,002 lumens	34 25 20	151 lm/W 151 lm/W 154 lm/W	3000K/4000K/5000K	6.5"	4"	8"
06-WPA-10L-LKFS	10,734 lumens 9,032 lumens 7,028 lumens	71 59 45	150 lm/w 153 lm/W 157 lm/W	3000K/4000K/5000K	8.5"	5"	11"

## ECONOMY/SMALL WALL PACK

- Field selectable output and color temperature
- Universal voltage 120-277V
- Power factor >0.90
- CRI >80
- Polycarbonate lens
- Built in photocell
- L70 = 156,000 hours



Product Number	Selectable Lumen Output*	Watts*	Efficacy*	Selectable CCT	Length (in)	Width (in)	Height (in)
06-WPE-3L-LKFS	3,327 lumens 2,709 lumens 2,090 lumens	24 19 14	140 lm/W 143 lm/W 145 lm/W	3000K/4000K/5000K	9"	6"	2.5"

\*Nominal values shown for CCT set at 4000K



### FULL CUT-OFF WALL PACK

- Field selectable output and color temperature
- Universal voltage 120-277V
- Power factor >0.90
- CRI >80
- Polycarbonate lens
- Optional photocell
- L70 = 136,000 hours



Product Number	Selectable Lumen Output*	Watts*	Efficacy*	Selectable CCT	Length (in)	Width (in)	Height (in)
06-WPFC-8L-LKFS	8,682 lumens	57	152 lm/W	3000K/4000K/5000K	14"	9"	6"
	7,048 lumens	46	156 lm/W				
	5,526 lumens	35	161 lm/W				
06-WPFC-15L-LKFS	16,848 lumens	113	149 lm/w	3000K/4000K/5000K	14"	9"	6"
	13,760 lumens	92	154 lm/W				
	10,987 lumens	71	159 lm/W				

### UP/DOWN CYLINDER LUMINAIRE

- Field selectable output and color temperature
- Light direction switch
- Universal voltage 120-277V
- Power factor >0.90
- CRI >90
- Built in photocell
- 0-10VDC Dimming drivers
- L70 = 140,000 hours



Product Number	Selectable Lumen Output*	Watts*	Efficacy*	Selectable CCT	Length (in)	Width (in)	Height (in)
06-CYL-UPDN-976L-3CCT	864 lumens	9	94 lm/W	3000K/4000K/5000K	4.5"	5.4"	3.1"
	707 lumens	7	94 lm/W				
	565 lumens	6	94 lm/W				
06-CYL-UPDN-201712L-3CCT	1,959 lumens	20	99 lm/w	3000K/4000K/5000K	4.5"	6.7"	11"
	1,662 lumens	17	100 lm/W				
	1,225 lumens	14	101 lm/W				
06-CYL-UPDN-302722L-3CCT	2,912 lumens	34	85 lm/W	3000K/4000K/5000K	5.7"	8.4"	13"
	2,660 lumens	30	90 lm/W				
	2,162 lumens	23	92 lm/W				



## PREMIUM LINEAR HIGH BAY

- Universal voltage 120-277V; optional 347-480V
- Power factor >0.90
- Sensor ready-Screw-in RCA receptacle
- 0-10Vdc dimming
- Field selectable output and color temperature
- Optional Passive Infrared (PIR) or microwave sensor sold separately
- L70 = 134,000 hours
- Emergency drivers available
- Optional narrow or wide distribution



Product Number	Selectable Lumen Output*	Watts*	Efficacy*	Selectable CCT	Length (in)	Width (in)	Height (in)
07-HBLSR-181512L-LKFS	18,085 lumens 14,555 lumens 12,007 lumens	120 96 76	150 lm/W 152 lm/W 158 lm/W	4000K/5000K	16.5"	10.25"	1.8"
07-HBLSR-241815L-LKFS	24,047 lumens 18,017 lumens 15,021 lumens	158 115 94	152 lm/W 157 lm/W 159 lm/W	4000K/5000K	23"	10.25"	1.8"
07-HBLSR-363024L-LKFS	35,517 lumens 30,037 lumens 24,049 lumens	237 193 152	150 lm/W 156 lm/W 158 lm/W	4000K/5000K	31"	10.25"	1.8"
07-HBLSR-604836L-LKFS	60,104 lumens 48,182 lumens 37,049 lumens	404 312 236	149 lm/W 154 lm/W 157 lm/W	4000K/5000K	44"	10.25"	1.8"

## LINEAR ADJUSTABLE HIGH BAY

- Universal voltage 120-277V
- Field selectable output and color temperature
- Sensor Ready-Screw-in RCA receptacle
- Power factor >0.90
- CRI >80
- 0-10Vdc dimming
- Optional Passive Infrared (PIR) or microwave sensor sold separately



### Accessories Sold Separately

07-HBLASR-WGK-24X4	Wire-guard kit – 15L & 23L
07-HBLASR-WGK-24X5	Wire-guard kit – 30L
07-LEDHB-PMK-S	Pendant mount kit – all models
07-LEDHB-SMK-S	Surface mount kit – all models



Product Number	Selectable Lumen Output	Watts	Efficacy	Selectable CCT	Length (in)	Width (in)	Height (in)
07-HBLASR-15129L-LKFS	15,819 lumens 12,681 lumens 9,935 lumens	107 83 64	140 lm/W 140 lm/W 140 lm/W	4000K/5000K	25.8"	12.1"	2"
07-HBLASR-242815L-LKFS	33,645 lumens 17,959 lumens 15,038 lumens	157 115 95	142 lm/W 140 lm/W 140 lm/W	4000K/5000K	25.8"	12.1"	2"
07-HBLASR-302418L-LKFS	31,090 lumens 25,457 lumens 19,469 lumens	205 163 121	140 lm/W 140 lm/W 140 lm/W	4000K/5000K	25.8"	12.1"	2"

LED Highbay Lights are an excellent choice for businesses looking to upgrade their lighting fixtures and save on energy costs.

CLL only stocks LED High Bay Lights from trusted suppliers who use premium materials and adhere to high safety standards.

## PREMIUM ROUND HIGH BAY

- Universal voltage 120-277V; optional 347-480V
- Power factor >0.90
- 0-10Vdc dimming
- Field selectable output and color temperature
- Sensor Ready- screw-in RCA receptacle
- Optional Passive Infrared (PIR) or microwave sensor sold separately
- L70 = 146,000 hours



Accessories Sold Separately	
07-HD07VR-PH-1	Passive Infrared Sensor
07-HD07VR-MH-B-1	Microwave step-dimming sensor
07-HBSD-325W-480-277	347-480V step-down transformer
07-HBRSR-ALREF-S	90° aluminum reflector - 07-HBRSR-221816L-4K5K models
07-HBRSR-PCREF-S	90° polycarbonate reflector - 07-HBRSR-221816L-4K5K models
07-HBRSR-ALREF-L	90° aluminum reflector - 07-HBRSR-353024L-4K5K models
07-HBRSR-PCREF-L	90° polycarbonate reflector - 07-HBRSR-353024L-4K5K models
07-HBRSR-YOKE-(x)	Yoke mount - all models (x)= -WHT or -BLK
07-LEDHBRSN-PSH-PRM-V2	Pendant snap hook - all models



Product Number	Selectable Lumen Output*	Watts*	Efficacy*	Selectable CCT	Diameter (in)	Height (in)	Color
07-HBRSR-221816L-4K5K	22,935 lumens	147	156 lm/W	4000K/5000K	10.6"	5.5"	WHT BLK
	18,790 lumens	115	163 lm/W				
	15,891 lumens	95	168 lm/W				
07-HBRSR-353024L-4K5K	35,716 lumens	229	156 lm/W	4000K/5000K	13"	5.6"	WHT BLK
	30,801 lumens	192	160 lm/W				
	24,368 lumens	146	167 lm/W				

## HIGH-LUMEN LINEAR HIGH BAY

- Universal voltage 120-277V; optional 347-480V
- Power factor >0.90
- Sensor Ready-Screw-in RCA receptacle (sensor sold separately)
- 0-10Vdc dimming
- Field selectable output and color temperature
- L70 = 135,000 hours
- Chain mounting kit is standard, other mounting options are available
- Optional Passive Infrared (PIR) or microwave sensor sold separately



Product Number	Selectable Lumen Output	Watts	Efficacy	Selectable CCT	Length (in)	Width (in)	Height (in)
07-FHBSR-181512L-LKFS	18,260 lumens	127	143 lm/W	4000K/5000K	13"	9.5"	3.7"
	15,387 lumens	104	148 lm/W				
	12,454 lumens	82	153 lm/W				
07-FHBSR-241815L-LKFS	23,772 lumens	150	150 lm/W	4000K/5000K	14.2"	10.25"	4.5"
	18,164 lumens	116	156 lm/W				
	15,480 lumens	98	159 lm/W				
07-FHBSR-363024L-LKFS	35,415 lumens	235	150 lm/W	4000K/5000K	19.7"	10.25"	6.5"
	29,825 lumens	192	155 lm/W				
	24,204 lumens	151	130 lm/W				
07-FHBSR-604836-LKFS	69,117 lumens	390	152 lm/W	4000K/5000K	30.7"	11"	9.25"
	47,698 lumens	305	156 lm/W				
	36,167 lumens	225	161 lm/W				

\*Nominal values shown for CCT set at 4000K

## STRIP LIGHT

- Universal voltage 120-277V
- Power factor >0.90
- CRI >80
- 0-10Vdc dimming
- Field selectable output and color temperature
- Optional passive infrared (PIR) or microwave sensor
- L70 = 196,000 hours
- Emergency drivers available



Product Number	Selectable Lumen Output*	Watts*	Efficacy*	Selectable CCT	Length (in)	Width (in)	Height (in)
05-SL-4FT-5L-LKFS	5,203 lumens	34	152 lm/W	3500K/4000K/5000K	47.3"	3.3"	3.5"
	4,317 lumens	30	143 lm/W				
	3,631 lumens	25	143 lm/W				
05-SL-8FT-10L-LKFS	10,124 lumens	68	149 lm/W	3500K/4000K/5000K	94.2"	3.3"	3.5"
	8,483 lumens	60	141 lm/W				
	7,135 lumens	55	130 lm/W				

## STRIP LIGHT SLIM

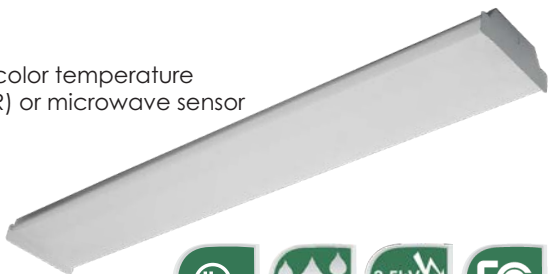
- Universal voltage 120-277V
- Field selectable output and color temperature
- Optional passive infrared (PIR) or microwave sensors
- Emergency drivers available
- Power factor >0.90
- CRI >80
- 0-10Vdc dimming
- L70 = 196,000 hours



Product Number	Selectable Lumen Output*	Watts*	Efficacy*	Selectable CCT	Length (in)	Width (in)	Height (in)
05-SLS-4FT-5L-LKFS	5,025 lumens	33	151 lm/W	3500K/4000K/5000K	47.3"	2.4"	2.8"
	4,305 lumens	30	143 lm/W				
	3,622 lumens	25	143 lm/W				
05-SLS-8FT-10L-LKFS	9,976 lumens	67	149 lm/W	3500K/4000K/5000K	94.2"	2.4"	2.8"
	8,862 lumens	58	152 lm/W				
	7,567 lumens	48	156 lm/W				

## PREMIUM WRAP LIGHT

- Field selectable output and color temperature
- Optional passive infrared (PIR) or microwave sensor
- Universal voltage 120-277V
- Emergency drivers available
- Power factor >0.90
- CRI >80
- 0-10Vdc dimming
- L70 = 196,000 hours



Product Number	Selectable Lumen Output*	Watts*	Efficacy*	Selectable CCT	Length (in)	Width (in)	Height (in)
05-WR-5L-LKFS	5,837 lumens	39	149 lm/W	3500K/4000K/5000K	47.7"	7.1"	2.8"
	4,932 lumens	32	152 lm/W				
	4,336 lumens	28	154 lm/W				

\*Nominal values shown for CCT set at 4000K

## ECONOMY WRAP LIGHT

- Field selectable output and color temperature
- Universal voltage 120-277V
- Power factor >0.90
- CRI >80
- 0-10Vdc dimming
- L70 = 196,000 hours



Product Number	Selectable Lumen Output*	Watts*	Efficacy*	Selectable CCT	Length (in)	Width (in)	Height (in)
05-WRE-6L-LKFS	5,880 lumens 5,017 lumens 3,925 lumens	45 40 30	131 lm/W 129 lm/W 131 lm/W	3500K/4000K/5000K	47.6"	5.4"	2"

## STAIRWELL LIGHT

- Field selectable output and color temperature
- Universal voltage 120-277V
- Power factor >0.90
- CRI >80
- 0-10Vdc dimming
- Optional occupancy/dimming sensor
- L70 = 190,000 hours
- Emergency drivers available



Product Number	Selectable Lumen Output*	Watts*	Efficacy	Selectable CCT*	Length (in)	Width (in)	Height (in)
05-SW-LKFS	6,499 lumens 4,941 lumens 4,311 lumens	45 33 28	146 lm/W 150 lm/W 152 lm/W	3500K/4000K/5000K	48"	4.5"	4"
05-SW-2FT	3,462 lumens 2,880 lumens 2,132 lumens	24 20 15	141 lm/W 143 lm/W 143 lm/W	3500K/4000K/5000K	22"	4.3"	4"



## VAPOR-TIGHT LIGHT

- ETL Sanitation listed for non-splash food zones to comply with NSF/ANSI 2 standards
- Field selectable color temperature
- Universal voltage 120-277V
- Power factor >0.90
- CRI >80
- L70 = 137,000 hours
- NEMA 4x



Product Number	Lumen Output*	Watts*	Efficacy*	Selectable CCT	Length (in)	Width (in)	Height (in)
05-VT-6L-KFS	6,256 lumens	42	148 lm/W	3500K/4000K/5000K	45.7"	4.7"	4.3"
05-VT-14L-KFS	14,327 lumens	93	156 lm/W	3500K/4000K/5000K	50"	10"	4.1"
05-VT-20L-KFS	21,447 lumens	140	152 lm/W	3500K/4000K/5000K	50"	10"	4.1"

## VAPOR-TIGHT SLIM LIGHT

- Field selectable output and color temperature
- Universal voltage 120-277V
- Power factor >0.90
- CRI >80
- L70 = 187,000 hours
- Emergency Drivers available
- Optional occupancy sensor



Product Number	Selectable Lumen Output*	Watts*	Efficacy*	Selectable CCT	Length (in)	Width (in)	Height (in)
05-VTS-7L-LKFS	7,611 lumens	51	149 lm/W	3500K/4000K/5000K	47"	3.8"	3"
	6,198 lumens	43	144 lm/W				
	5,303 lumens	36	146 lm/W				

## T8 LED REPLACEMENT LAMPS

- Universal voltage 120-277V
- Non-dimming
- CRI >80
- L70 = 54,000 hours
- 02-T8L-7X (8-ft) Series- Double-ended, integrated driver, Type B for bypass only
- 4-ft lamp Series- Single or double-ended, integrated driver, Type B for bypass only



Product Number	Lumen Output	Watts	Efficacy	CCT	Length (in)	Width (in)	Height (in)
02-T8LIDFH11-2200-4FT-CBA-7T	2,200 lumens	17	130 lm/W	4000K	47.2"	1"	1"
02-T8LIDFH11-2200-4FT-EBA-7T	2,200 lumens	17	130 lm/W	5000K	47.2"	1"	1"
02-T8LIDFH11-5000-8FT-EBA-7X	5,500 lumens	40	138 lm/W	5000K	93.2"	1"	1"
02-L8L1-BPMFH-G2-17W-ABTSE2200-4C	2,100 lumens*	17*	124 lm/W*	Selectable 27 / 30 / 35 / 40 / 50 / 6000K	47.2"	1"	1"

\*Nominal values shown for CCT set at 4000K



## T5 LED REPLACEMENT LAMPS

- Universal 120-277Vac input
- Non-dimming
- L70 = 54,000 hours
- CRI>80
- Double-ended, integrated driver, Type B for bypass only



Product Number	Lumen Output	Watts	Efficacy*	Selectable CCT	Length (in)	Width (in)	Height (in)
02-T5L-ISFH14-3500-4FT-EBA-01	3,500 Lumens	25	140 lm/W	5000	45.2"	0.7"	0.7"

## ECONOMY UNDER CABINET LIGHT

- Standard 120Vac input
- Power factor >0.90
- CRI >90
- Triac dimming
- Field selectable color temperature
- L70 = 196,000 hours



Product Number	Lumen Output*	Watts*	Efficacy*	Selectable CCT	Length (in)	Width (in)	Height (in)
14-UCE-9-KFS	412	5	86 lm/W	27K/30K/35K/40K/50K	9"	3.5"	1"
14-UCE-12-KFS	450	5	92 lm/W	27K/30K/35K/40K/50K	12"	3.5"	1"
14-UCE-18-KFS	770	9	88 lm/W	27K/30K/35K/40K/50K	18"	3.5"	1"
14-UCE-21-KFS	764	9	90 lm/W	27K/30K/35K/40K/50K	21"	3.5"	1"
14-UCE-24-KFS	803	9	91 lm/W	27K/30K/35K/40K/50K	24"	3.5"	1"
14-UCE-33-KFS	1,245	14	91 lm/W	27K/30K/35K/40K/50K	33"	3.5"	1"
14-UCE-42-KFS	1,543	18	88 lm/W	27K/30K/35K/40K/50K	42"	3.5"	1"

INDOOR LIGHTING

## CENTER BASKET

- Field selectable output and color temperature
- Universal voltage 120-277V
- Power factor >0.90
- CRI >80
- 0-10Vdc dimming
- PMMA lens
- L70 = 196,000 hours
- Emergency drivers available



Mounting Accessories and Emergency Drivers (Sold Separately)	
05-SMKT-22	Surface Mounting Kit for 2x2 panel
05-SMKT-24	Surface Mounting Kit for 2x4 panel
05-FLANGEKIT22-ET	Flange Mounting Kit for 2x2 panel
05-FLANGEKIT24-ET	Flange Mounting Kit for 2x4 Panel
05-PNL-CM	Cable Mounting Kit
03-BLEM-CP-5C	Remote Mount Emergency driver - EM5
03-BLEM-CP-10C	Remote Mount Emergency driver - EM10
03-BLEM-CP-13C	Remote Mount Emergency driver - EM13



Product Number	Selectable Lumen Output*	Watts*	Efficacy*	Selectable CCT	Length (in)	Width (in)	Height (in)
05-CB22-4L-LKFS	4,370 lumens	31	140 lm/W	3500K/4000K/5000K	23.7"	23.7"	2"
	3,772 lumens	27	142 lm/W				
	3,176 lumens	22	144 lm/W				
05-CB24-6L-LKFS	5,858 lumens	43	137 lm/W	3500K/4000K/5000K	47.8"	23.7"	2"
	5,062 lumens	36	139 lm/W				
	4,556 lumens	32	141 lm/W				

## PANEL LIGHTS

- Universal voltage 120-277V
- Power factor >0.90
- Field selectable output and color temperature
- CRI >80
- 0-10Vdc dimming
- PMMA lens
- L70 = 144,000 hours



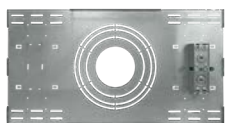
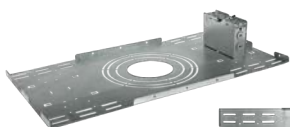
Mounting Accessories (Sold Separately)	
05-SMKT-14	Surface Mount Kit for 1x4 panel
05-SMKT-22	Surface Mount Kit for 2x2 panel
05-SMKT-24	Surface Mount Kit for 2x4 panel
05-FLANGEKIT14-ET	Flange Mount kit for 1x4 panel
05-FLANGEKIT22-ET	Flange Mount Kit for 2x2 panel
05-FLANGEKIT24-ET	Flange Mount Kit for 2x4 Panel
05-PNL-CM	Cable Mounting Kit



Product Number	Selectable Lumen Output*	Watts*	Efficacy*	Selectable CCT	Length (in)	Width (in)	Height (in)
05-PNL1X4-40L-LKFS	4,300 lumens	33	131 lm/W	3500K/4000K/5000K	47.7"	11.8"	1.5"
	3,700 lumens	27	137 lm/W				
	2,730 lumens	19	140 lm/W				
05-PNL2X2-40L-LKFS	4,290 lumens	32	135 lm/W	3500K/4000K/5000K	23.7"	23.7"	1.5"
	3,810 lumens	27	142 lm/W				
	2,800 lumens	19	145 lm/W				
05-PNL2X4-50L-LKFS	5,250 lumens	37	141 lm/W	3500K/4000K/5000K	47.7"	23.7"	1.5"
	4,575 lumens	32	144 lm/W				
	3,323 lumens	23	148 lm/W				

## ARCHITECTURAL LED DOWNLIGHT

- Universal Voltage 120-277V
- Field selectable output and color temperature
- 0-10Vdc dimming
- Power factor >0.90
- L70 = 149,000 hours
- IC rated
- New construction or retrofit applications



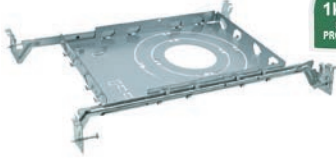
Mounting Accessories (Sold Separately)	
11-MP-UD46810-NC	Mounting Plate

Product Number	Selectable Lumen Output*	Watts*	Efficacy*	Selectable CCT	Length (in)	Width (in)	Height (in)
11-CDR4-1L-LKFS-WHT (White Baffle)	1,000 lumens	12	83 lm/W	2700K/3000K/4000K/5000K	5.1"	5.1"	3.2"
	800 lumens	9	89 lm/W				
	500 lumens	6	83 lm/W				
11-CDR4-1L-LKFS-SW (Specular White)	1,000 lumens	12	83 lm/W	2700K/3000K/4000K/5000K	5.1"	5.1"	3.2"
	800 lumens	9	89 lm/W				
	500 lumens	6	83 lm/W				
11-CDR6-2L-LKFS-WHT	2,000 lumens	20	100 lm/W	2700K/3000K/4000K/5000K	8.4"	8.4"	4.2"
	1,500 lumens	15					
11-CDR6-2L-LKFS-SW	2,000 lumens	20	100 lm/W	2700K/3000K/4000K/5000K	8.4"	8.4"	4.2"
	1,200 lumens	15					
11-CDR8-5L-LKFS-WHT	5,000 lumens	50	100 lm/W	2700K/3000K/4000K/5000K	10"	10"	4.5"
	4,000 lumens	40					
11-CDR10-5L-LKFS	4,797 lumens	47	102 lm/W	2700K/3000K/4000K/5000K	11"	11"	6"
	3,710 lumens	40	92 lm/W				
	2,947 lumens	31	95 lm/W				

\*Nominal values shown for CCT set at 4000K

## CANLESS RECESSED DOWNLIGHT

- Universal Voltage 120V
- Field selectable output and color temperature
- Power factor >0.90
- L70 = 174,000 hours
- IC rated
- New construction or retrofit applications



Mounting Accessories (Sold Separately)	
11-MP-UD346-NC	Mounting Plate

Product Number	Selectable Lumen Output*	Watts*	Efficacy	Selectable CCT*	Length (in)	Width (in)	Height (in)
11-IMODCR4-8L-KFS	800 lumens	10	80 lm/W	2700/3000/3500/4000/5000K	5.5"	5.5"	2"
11-IMODCR6-12L-KFS	1200 lumens	14	86 lm/W	2700/3000/3500/4000/5000K	7.4"	7.4"	2"

## FLAT PANEL LIGHT

- Dedicated 120V (60Hz)
- Power factor >0.90
- Triac dimming
- Field selectable color temperature
- L70 = 181,000 hours (4-inch);  
L70 = 173,000 hours (6-inch)



Mounting Accessories (Sold Separately)	
11-MP-UD346-NC	Mounting Plate

Product Number	Lumen Output*	Watts*	Efficacy*	Selectable 5CCT	Length (in)	Width (in)	Height (in)
11-FPR3-4L-KFS	400 lumens	6	66 lm/W	2700K/3000K/3500/4000K/5000K	3.6"	3.6"	0.9"
11-FPR4-6L-KFS	600 lumens	9	85 lm/W	2700K/3000K/3500/4000K/5000K	4.7"	4.7"	0.8"
11-FPR6-10L-KFS	1,000 lumens	15	66 lm/W	2700K/3000K/3500/4000K/5000K	6.7"	6.7"	0.8"
11-FPR8-14L-KFS	1,400 lumens	18	78 lm/W	2700K/3000K/3500/4000K/5000K	8.9"	8.9"	0.9"



Great products for a great price! Quality products and people at Cost Less Lighting! Sales team is always helpful to find anything that will fit our project needs!

**John H.  
Hilliker Electric**



## 4" CANS AND TRIMS

- Standard 120V input
- IC Rated
- Triac dimming
- CRI>90
- L70 = 119,000 hours
- E26 Edison Adapter for retrofit applications included
- Selectable color temperature



Trim Part	Description	Lumen Output*	Watts*	Efficacy*	Selectable CCT	Length (in)	Width (in)	Height (in)
11-MODR4-7L-KFS	Round White Baffle Trim	700 lumens	10	70 lm/W	27/30/35/40/50 Kelvin	5.1"	5.1"	2.3"
11-MODGR4-7L-KFS	Round White Gimbal	700 lumens	10	70 lm/W	27/30/35/40/50 Kelvin	5.1"	5.1"	2.4"

### 4" Dedicated LED IC Rated Recessed Cans

New Construction Can	Remodel Can
11-4C-LED-NIC-NND	11-4C-LED-RIC-NND



## 6" CANS AND TRIMS

- Standard 120V input
- IC Rated
- Triac dimming
- CRI>90
- L70 = 119,000 hours
- E26 Edison Adapter for retrofit applications included
- Selectable color temperature



Trim Part	Description	Lumen Output*	Watts*	Efficacy*	Selectable CCT	Length (in)	Width (in)	Height (in)
11-MODR6-10L-KFS	Round White Baffle Trim	1000 lumens	14	71 lm/W	27/30/35/40/50 Kelvin	7.4"	7.4"	2.4"
11-MODGR6-10L-KFS	Round White Gimbal	1000 lumens	16	63 lm/W	27/30/35/40/50 Kelvin	7.4"	7.4"	2.8"

### 6" Dedicated LED IC Rated Recessed Cans

New Construction Can	Remodel Can
11-6C-LED-NIC-NND	11-6C-LED-RIC-NND



\*Nominal values shown for CCT set at 4000K

## 6" SLOPED INCANDESCENT RECESSED CANS & TRIMS

- Adjustable socket
- For pitched ceilings 10-30 degrees
- Accommodates up to 75W R30/PAR30 Incandescent lamps
- Thermal protection
- IC Rated



Trim Part	Description	Lamping	Trim Color	Baffle Color
11-6SLWSTEP	Sloped White Baffle Trim	E26 PAR30/R30 up to 75W	White	White
11-6SLBSTEP	Sloped Black Baffle Trim	E26 PAR30/R30 up to 75W	White	Black

### 6" Sloped Ceiling IC Rated Recessed Cans

New Construction Can	Remodel Can
11-R6SLNWIC	11-R6SLRMIC



## SURFACE MOUNT LIGHT

- Dedicated 120V (60Hz)
- Power factor >0.90
- Field selectable color temperature
- CRI >80
- Triac Dimming
- Polycarbonate lens
- L70 = 157,000 hours



Product Number	Lumen Output*	Watts*	Efficacy*	Selectable 5CCT	Length (in)	Width (in)	Height (in)
05-SMR11-KFS	1,000 lumens	14	71 lm/W	2700K/3000K/3500K/4000K/5000K	11"	11"	3"
05-SMR14-KFS	1,400 lumens	20	70 lm/W	2700K/3000K/3500K/4000K/5000K	14"	14"	3"
05-SMS12-KFS	1,000 lumens	14	71 lm/W	2700K/3000K/3500K/4000K/5000K	12"	12"	3"
05-SMS14-KFS	1,500 lumens	20	75 lm/W	2700K/3000K/3500K/4000K/5000K	14"	14"	3"

## DOUBLE-RING, SURFACE-MOUNT LIGHT

- Dedicated 120V (60Hz)
- Power factor >0.90
- Field selectable color temperature
- CRI >90
- Triac dimming
- Polystyrene lens
- L70 = 93,000 hours
- Brushed nickel ring color



Product Number	Lumen Output*	Watts*	Efficacy*	Selectable 5CCT	Length (in)	Width (in)	Height (in)
05-DR12-12L-5CCT	1,200 lumens	17	70 lm/W	2700K/3000K/3500K/4000K/5000K	12"	12"	3.5"
05-DR14-18L-5CCT	1,800 lumens	22	81 lm/W	2700K/3000K/3500K/4000K/5000K	14"	14"	3.5"
05-DR16-20L-5CCT	2,000 lumens	26	77 lm/W	2700K/3000K/3500K/4000K/5000K	16"	16"	3.5"

## ROUND FLAT DISK LIGHTS

- Dedicated 120Vac (60Hz)
- Power factor >0.90
- Triac dimming
- Field selectable color temperature
- L70 = 174,000 hours
- CRI > 90

NEW



Product Number	Lumen Output*	Watts*	Efficacy*	Selectable 5CCT	Length (in)	Width (in)	Height (in)
05-DL5-8L-5CCT	800 lumens	10	88 lm/W	2700K/3000K/3500K/4000K/5000K	5.5	5.5	.79
05-DL7-12L-5CCT	1200 lumens	15	84 lm/W	2700K/3000K/3500K/4000K/5000K	7.5	7.5	.79
05-DL9-14L-5CCT	1400 lumens	17	85 lm/W	2700K/3000K/3500K/4000K/5000K	8.9	8.9	.79
05-DL11-20L-5CCT	2000 lumens	20	103 lm/W	2700K/3000K/3500K/4000K/5000K	11	11	1
05-DL13-22L-5CCT	2200 lumens	22	104 lm/W	2700K/3000K/3500K/4000K/5000K	12.8	12.8	1

## DISK LIGHT

- Dedicated 120V (60Hz)
- Power factor >0.90
- Triac dimming
- Field selectable color temperature
- L70 = 119,000 hours



Product Number	Lumen Output*	Watts*	Efficacy*	Selectable 5CCT	Length (in)	Width (in)	Height (in)
11-DK6-10L-KFS	1,000 lumens	15	66 lm/W	2700K/3000K/3500K/4000K/5000K	7.2"	7.2"	1.4"
11-DK6-10L-KFS-OS	1,000 lumens	15	66 lm/W	2700K/3000K/3500K/4000K/5000K	7.4"	7.4"	1"

“

I have worked with our rep for many years. It is so nice to be able to call and hear the same friendly voice after all this time. We are very satisfied with the service we receive from him. He always comes through for us in a pinch.

**Penny P.**  
Accurate Fire & Security

”



## Die-Cast Aluminum Exit Sign



- Dual 120/277 voltage
- Premium, die-cast aluminum housing
- Internal automatic switching to emergency battery mode
- Meets UL924, NFPA 101 Life Safety code



Product Number	No. of Faces	Letter Color	Housing Color	Battery	Options
04-XDC	Single Double Universal Single/ Double	Red Green	White Black Brushed Aluminum	AC-Only EM-Battery Back-up	Self-Diagnostic Dual Circuit Tamper-proof Assembled in USA

## Edge-Lit Exit Sign



- Dual 120/277 voltage
- Premium, extruded aluminum housing
- Internal automatic switching to emergency battery mode
- Mounting canopy for top, end or back mounting
- Meets UL924, NFPA 101 Life Safety code



Product Number	No. of Faces	Letter Color	Panel Color	Housing Color	Battery	Options
04-XEDU	Single Double	Red Green	Clear Mirror White	White Black Aluminum	AC-Only EM-Battery Back-up	Self-Diagnostic Dual Circuit (120V or 277V0) Special Wording Assembled in USA

## Slim Profile LED Thermoplastic Exit Sign

- Dual 120/277 voltage
- Red/Green Selectable available
- Engineering grade, 5VA flame retardant Thermoplastic
- Internal automatic switching to emergency battery mode
- Mounting Canopy for top or side mounting or Universal KO for wall mount
- Meets UL924, NFPA 101 Life Safety code



Product Number	LED/Letter Color	Housing Color	Battery	Options	
04-X	Red Green Red/Green Selectable	White Black	AC-Only EM-Battery Back-up	Self-Diagnostic Dual Circuit Custom Wording Assembled in USA	SL- Low Profile

## Exit/Emergency Two-Head Thermoplastic Combo Unit

- Dual 120/277 voltage
- Red/Green Selectable available
- 1.5-watt (3 LEDs x 0.50 watt) per head
- 3.6V Long-life rechargeable NiCad battery
- Internal automatic switching to emergency battery mode
- Engineering grade, 5VA flame retardant Thermoplastic
- Mounting Canopy for top or side mounting or Universal KO for wall mount
- Meets UL924, NFPA 101 Life Safety code



Product Number	No. of Faces	LED/Letter Color	Housing Color	Options
04-CEM	Universal Single/Double	Red Green RED/GREEN Selectable	White Black	Remote Capacity Self-Diagnostic Assembled in USA

## Reduced Profile LED Adjustable Two-Head Emergency Unit

- Dual 120/277 voltage
- 1.5-watt (3 LEDs x 0.50 watt) per head;
- 3.6V Long-life rechargeable NiCad battery;
- Internal automatic switching to emergency battery mode
- Engineering grade, 5VA flame retardant Thermoplastic
- Meets UL924, NFPA 101 Life Safety code



Product Number	Housing Color	Options
04-EM	White Black	Self-Diagnostic Remote Capacity

## Decorative Outdoor LED AC/Emergency Unit

- 4.8V long life, rechargeable NiCad Battery
- Automatic Emergency on switch
- 90 minutes illumination
- Self-Diagnostic monthly, bi-annual and annual testing
- Photocell standard
- Optional internal heater for extreme cold weather
- CEC Title 20 certified optional
- Meets UL924, NFPA 101 Life Safety code



Product Number	Housing Color	Voltage	Wattage	Output (Lumens)
04-WPLED-ACEM	White Black Dark Bronze Nickel	Universal 120-277V	12W	1,286 (AC mode) 350 (DC mode)

## Micro/Mini/Large Inverter Emergency Power Systems

Electrical inverter systems for powering up to 1150W of incandescent, fluorescent, induction or LED lighting loads. Pulse width modulated (PWM) output design provides clean, 60 Hz. sinusoidal emergency power to loads.

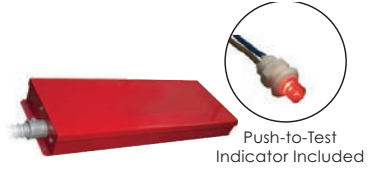


Optional

Product Number	Capacity	Mounting	Options
03-MPS	20 Watts 32 Watts 35 Watts 55 Watts	Surface Recessed Ceiling T-Grid	Self-Diagnostics CEC-Title 20 Compliant Remote Test Switch Panel
03-PINV	55 Watts/125VA 110 Watts/ 125VA 110Watts/250VA 220Watts/250VA	Surface Recessed Ceiling T-Grid	Self-Diagnostics CEC-Title 20 Compliant Remote Test Switch Panel 4C- 4-output Circuit Switching AO-Adjustable Output/Dimmer Bypass
03-LPS	375 Watts 600 Watts 750 Watts 950 Watts 1150 Watts	Surface	Self-Diagnostics CEC-Title 20 Compliant Remote Test Switch Panel 4C- 4-output Circuit Switching 4AO-Adjustable Output/Dimmer Bypass Input Circuit Breaker Output Circuit Breaker

## Emergency Driver for LED Lamps

Our dependable emergency driver provides regulated power to LED lamps during a power outage. Our emergency driver has versatile mounting options: inside, on-top or remote mount. Includes a push-to-test indicator switch.



Push-to-Test Indicator Included

Product Number	Output Voltage	Output Wattage
03-LEDEM-BF/DM-20W-E	180VDC	20 Watts



## Constant-Power Emergency LED Drivers

Provides constant power output to the load during emergency mode operation. Suitable for installation inside, on-top, or in remote mount of the LED Strip Lights and other fixtures. Electronic limiting with normal operation resuming upon removal of fault. UL Listed, Field-installed.

- CEC Title 20 Compliant standard on models -MV and -HV



Product Number	Current (mA)	Output Voltage (VDC)	Output Wattage (W)	Lumens (Lm)
03-LEDEM-CP-1200	390-156	20-50	7.8	1200
03-LEDEM-CP-2400	850-340	20-50	17.0	2400



Product Number	Current (mA)	Output Voltage (VDC)	Output Wattage (W)	Options
03-BLEM-CP-5	250-100	20-50	5	-C = Provided with 2' flex conduit on each end
03-BLEM-CP-10	535-214	20-50	10.7	
03-BLEM-CP-13	685-274	20-50	13.7	



They're my favourite and best vendor to deal with! My rep always knows a lot about what he's offering and always helpful.

**Matthew P.  
Ledpax**



## MICROWAVE OR DAYLIGHT HARVESTING / OCCUPANCY SENSOR

### 13-HD406VRH-D

- Multi-volt: 120-277V
- Rated up to 3A @120V
- Operating Temperature of -35°C to 60°C
- Mounts up to 49ft
- Requires remote to adjust factory settings (HD03R)



## CEILING MOUNTED PIR OCC SENSOR

### 13-OSC52V

- Replaces a standard light or fan switch
- Time-delay adjustment from 10 seconds up to 30 minutes
- Sensitivity adjustment
- Light level sensing adjustment sets brightness value upon activation



## 360° HIGH BAY OCC SENSOR

### 05-FL-OSFHU-RG-QC

- Passive Infrared Technology:
- Turn lights ON in response to the heat generated energy
- Mounts directly onto a luminaire
- Operational Mode: Auto ON, Auto OFF
- Time Delay: Adjustable (15 seconds up to 30 minutes)
- Coverage Range: High Bay mounting heights up to 25' mounting / 360° field
- 120/277VAC, 60Hz Voltage
- Load Requirements: 800VA at 120VAC



## RF CONTROL

### 13-PPA401S

- Multi-volt: 120-277V
- 0-10V Dimming
- Operating Temperature of 0° - 40°C
- Rated up to 1200W
- Remote Required



## BLUETOOTH CONTROL

### 13-PPA102S

- Multi-volt: 120-277V
- 0-10V Dimming
- Rated up to 13.1A
- Bluetooth Mesh
- App controlled



## EXTERNAL SCREW-IN PIR SENSOR

### 07-HD07VR-PH-1(-90)

- 12VDC Input Power
- Screw in RCA Jack compatible with most standard receptacles
- Operating temperature of -20°C to 60°C
- Mounts up to 39ft
- Requires remote to adjust factory settings (HD05R)
- Detachable angled arm adapter



## 3-PIN NEMA PHOTOCELL

### 08-JL-205C23-IP65

- Multi-volt: 120-277V
- Turns on at 6 lux, turns off at 50 lux
- Operating Temperature of -40°C to 70°C
- Rated up to 1800W
- Preset 5-30 second time delay



## EXTERNAL SCREW-IN MICROWAVE SENSOR

### 07-HD07VR-MH-B-1(-90)

- 12VDC Input Power
- Screw in RCA Jack compatible with most standard receptacles
- Operating temperature of -20°C to 60°C
- Mounts up to 49ft
- Requires remote to adjust factory settings (HD05R)
- Detachable angled arm adapter



## 480V NEMA PHOTOCELL

### 08-26WA86

- Input Voltage of 480V
- Turns on at 10-20 lux, off at 30-60 lux
- Operating Temperature of -40°C to 70°C
- Rated up to 1800W



## PHOTOCELLS

### 06-120/277V-BPC 06-120/277V-PPC2

- Multi-volt: 120-277V
- Turns on at 10-20 lux, turns off at 30-80 lux
- Operating Temperatures of -40°C - 70°C
- Rated for up to 5A
- Preset 3-10 second time delay



## 180° PIR WALLBOX VACANCY & OCC SENSOR

### 13-OCC-VACSEN-WH-MV

- PIR detects motion from heat-emitting source
- Replaces a standard light or fan single-pole switch
- Automatic ON/OFF and manual ON / Automatic OFF operation
- Neutral wire required.
- LED Indicates motion was sensed
- Adjustable time delay from
- 15 seconds - 30 minutes
- Multi-volt



## DIMMERS

### 13-DWS-010V-T 13-DWS-010V-D

- Multi-volt: 120-277V
- Rated up to 600W
- Compatible with LED/ CFL/Incandescent Lamps and Luminaires
- Single pole and 3 Way applications



## PRODUCT NUMBER

## RECEPTACLES

13-115R-S-WH	15 amp Duplex Single Recep.
13-120R-S-WH	20 amp Duplex Single Recep.
13-15R-D-WH	15 amp Decora Recep.
13-15R-D-TR-WH	15 amp Decora Recep. Tamper
13-15R-S-WH	15 amp Duplex Recep.
13-15R-S-TR-WH	15 amp Duplex Recep. Tamper
13-20R-D-WH	20 amp Indust Decora Recep.
13-20R-D-WH-TR	20 amp Indust Decora Recep. Tamper
13-20R-S-WH	20 amp COM Stand Duplex Recep.
13-DD30A-4S	Dryer/Range Receptacle, 30A
13-DD50A-4S	Dryer/Range Receptacle, 50A
13-TR20-DC	20 amp Tamper Decora Recep.
13-TR20-SC	20 amp Tamper Duplex Recep.
13-USB-15-TR	15 amp Receptacle USB Tamper
13-USB-20R-TR	20 amp Receptacle USB Tamper



## PRODUCT NUMBER

## SWITCHES

13-DS115	Single Pole Decora Switch 15 Amp
13-DS315	3-way Decora Switch 15 Amp
13-DS415	4-way Decora Switch 15 Amp
13-TS115	Single Pole Toggle Switch 15 Amp
13-TS215	2-Way Toggle Switch Side 15 Amp
13-TS315	Duplex Horizontal Toggle Switch



## PRODUCT NUMBER

## GFCI

13-GFCI-ST-20TR-WH-K	20 amp Self Testing Tamper
13-GFCI-ST-20TRWR-WH-K	20 amp Self Testing Tamper/WR
13-GFCI-ST-15TR-WH-K	15 amp Self Testing Tamper
13-GFCI-ST-15TRWR-WH-K	15 amp Self Testing Tamper/WR



PRODUCT NUMBER	FACE PLATES
13-1T-WH	1 Gang Phone Jack
13-1J-WH	1 Gang Coaxial Jack
13-1RP-WH	1 Gang Single Recep. Plate
13-BP1-WH	1 Gang Blank Plate
13-BP2-WH	2 Gang Blank Plate
13-DDR-PL2-SS	Dryer Stainless Steel Plate
13-DP1-WH	1 Gang Decorative Plate
13-DP2-WH	2 Gang Decorative Plate
13-DP3-WH	3 Gang Decorative plate
13-DP4-WH	4 Gang Decorative Plate
13-DRP1-WH	1 Gang Duplex Recep. Plate
13-DRP2-WH	2 Gang Duplex Recep. Plate
13-TP1-WH	1 Gang Toggle Plate
13-TP2-WH	2 Gang Toggle Plate
13-TP3-WH	3 Gang Toggle Plate



**ASK ABOUT OUR WHIPS, CORDS AND OTHER ACCESSORIES FOR YOUR PROJECT!**

### WIRE CONNECTORS

Broad offering of popular, standard types including Barrel, Winged and Winged Easy-turn and Push-in connectors:

#### Barrel

Product Number	Color
15-P6001	Red
15-P2001	Baby Blue
15-P4001	Yellow
15-P3001	Orange

#### Winged/Winged Easy

Product Number	Color
15-P1301	Red
15-N1001	Yellow (Easy)
15-P1101	Yellow
15-N2001	Red (Easy)
15-P1501	Big Grey
15-P1701	Big Blue
15-P9901	Green
15-P1201	Tan

#### Push-In

Product Number	Ports/Color
15-PC25201	2-port Red
15-PC25301	3-port Orange
15-PC25401	4-port Yellow



### GOOF RINGS

- 50 Pack
- High Quality White Plastic Goof Ring for Can Lights & Down Lights
- Outside Diameter: Approximately 7 7/8" Inches or 20 Centimeters
- Inside Diameter: Approximately 5 7/8" Inches or 15 Centimeters.
- Replaces The Ring Of a 6 Inch Baffle Trim Can Light



### CABLE TIES

- 100 pieces per bag
- Operating Temp: -4°F ~ 185°F
- 50 lb Tensile Strength

Product Number	Description	Color	Length (in.)	Width (in.)
16-850-SMN	Screw Mount Plenum Cable Tie	Natural	8	0.19
16-850-N100	UV Rated Plenum Cable Ties	Natural	8	0.19
16-1150-N100	UV Rated Plenum Cable Ties	Natural	11	0.19
16-1450-N100	UV Rated Plenum Cable Ties	Natural	14.5	0.19
16-850-B100	UV Rated Plenum Cable Ties	Black	8	0.19
16-1150-B100	UV Rated Plenum Cable Ties	Black	11	0.19
16-1450-B100	UV Rated Plenum Cable Ties	Black	14.5	0.19





# FREE SHIPPING OVER \$300!

Orders of \$300+ being shipped to a single location within the contiguous 48 states will not be charged freight. We'll choose the carrier and method.

## Terms & Conditions

### Return Policy

All returns need to include all the original parts, accessories and instruction manuals and must be in the original box. Items that have cut wires, dents, scratches, show signs of installation or are missing the original product manuals will not be accepted for return or exchange or credit. **Please contact your sales representative so that we may issue a RMA number and special return address before the item is shipped back.** Items are not returnable without a pre-authorized RMA number and subject to a 25% restocking fee. Any items returned without a pre-authorized RMA # will be denied credit.

There are no returns on special order and/or custom fixtures and/or devices made to customers required specifications.

Credits and refunds on returned items will be issued within business 5 days from receipt of the merchandise at our processing center once they have been evaluated.

### Damaged Shipments

Always inspect your shipment when it arrives. If anything is damaged please contact us immediately. Damaged goods claims need to be reported within 7 business days from date of delivery. No replacements for damaged products will be sent after 7 days.

For additional information visit <https://costlesslighting.com/return-policy/> or contact our reps at 866-633-6883

### Remittance Terms & Credit Cards Accepted

Cost Less Lighting accepts American Express, MasterCard, Visa, pre-pay orders and open accounts upon approval. All our transactions are processed through Authorize.net.

PRESRT STD  
U.S. POSTAGE

**PAID**

ONTARIO, CA  
PERMIT #465

4200 Regent St. Suite 200  
Columbus, OH 43219

**CONTACT US FOR  
A FREE QUOTE  
TODAY!**

833-504-9980 • [costlesslighting.com](http://costlesslighting.com)



**COST LESS  
LIGHTING**